

ABLTEK

ABLTEK

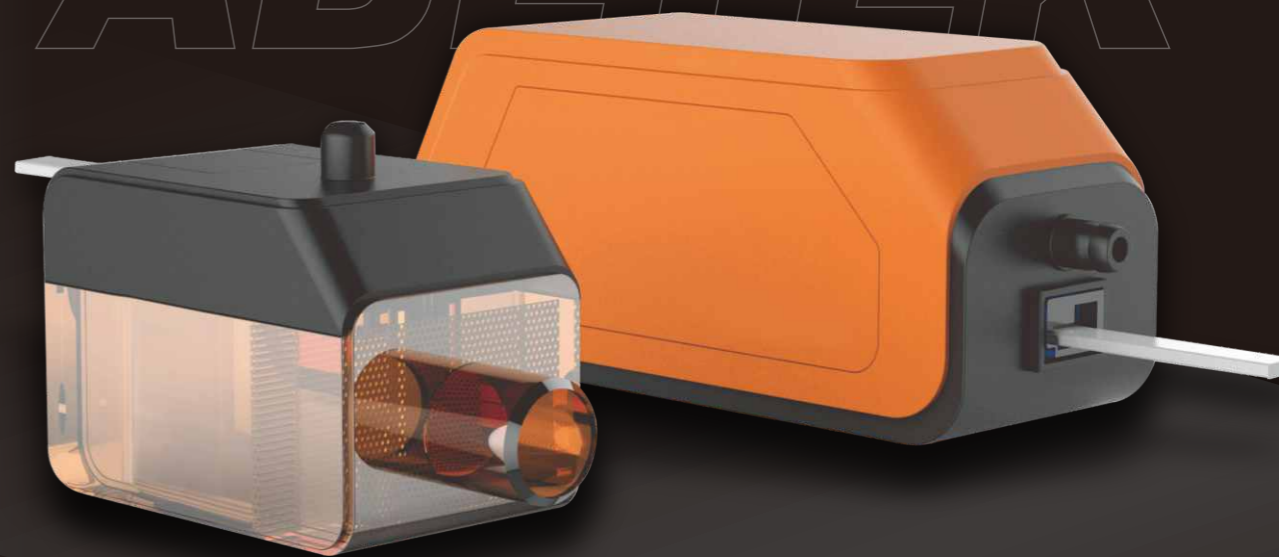
Devoted to be Delicate · Create the World-Class Quality



2024

Hangzhou Abltek Intelligent Electrical Co., Ltd.

ABLTEK



Hangzhou Abltek Intelligent Electrical Co., Ltd.

ADD: NO.3 Dadiankou Industrial Zone, Hangtoun town, Jiande, Hangzhou, Zhejiang, China

MOBILE / WECHAT / WHATSAPP: 0086 15888513619

0086 18657457888

TEL: 0086-571-64175881

FAX: 0086-571-64175881

EMAIL: abltek@abltek.com.cn

www.abltek.com.cn



QR FOR WEBSITE



QR FOR WHATSAPP

2024

Hangzhou Abltek Intelligent Electrical Co., Ltd.

Accessories and Components for Air conditioning ,Refrigeration, Heating and Ventilation

Catalogue

Drain Water Expertor Application For AC / Refrigeration / Dehumidifier

001-002	Condensate Drain Pump-----Selection Guide
003-004	Mini Silent Condensate Drain Pump
005-006	Mini Slim Condensate Drain Pump
007-008	Mini White Condensate Drain Pump
009-010	Mini Tank Condensate Drain Pump
011-012	Max Flow Condensate Drain Pump
013-014	Supermarket Low Profile Condensate Drain Pump

Accessories Series Application For Air Condition

015	AC Bracket
016	Air-Conditioning Tape
017-018	Anti-vibrations Feet For Wall Support
019	Embedded Pre-installation Box
020	Outdoor Air Conditioner Rubber Ground Base Bracket

Charging Refrigerant System Application For AC / Refrigeration

021	Electronic Refrigerant Scale
022	Programmable Refrigerant Scale
023-026	Manifolds

Cleaner Expertor Application For AC / Auto / Refrigeration

027	AC Wash Machine
028	High Pressure AC Cleaner
029-030	Adjustable High Pressure Cleaner

Charging Expertor Application For Refrigeration

031-032	Electric Oil Charing Pump
033-034	Oil Transfer Pump

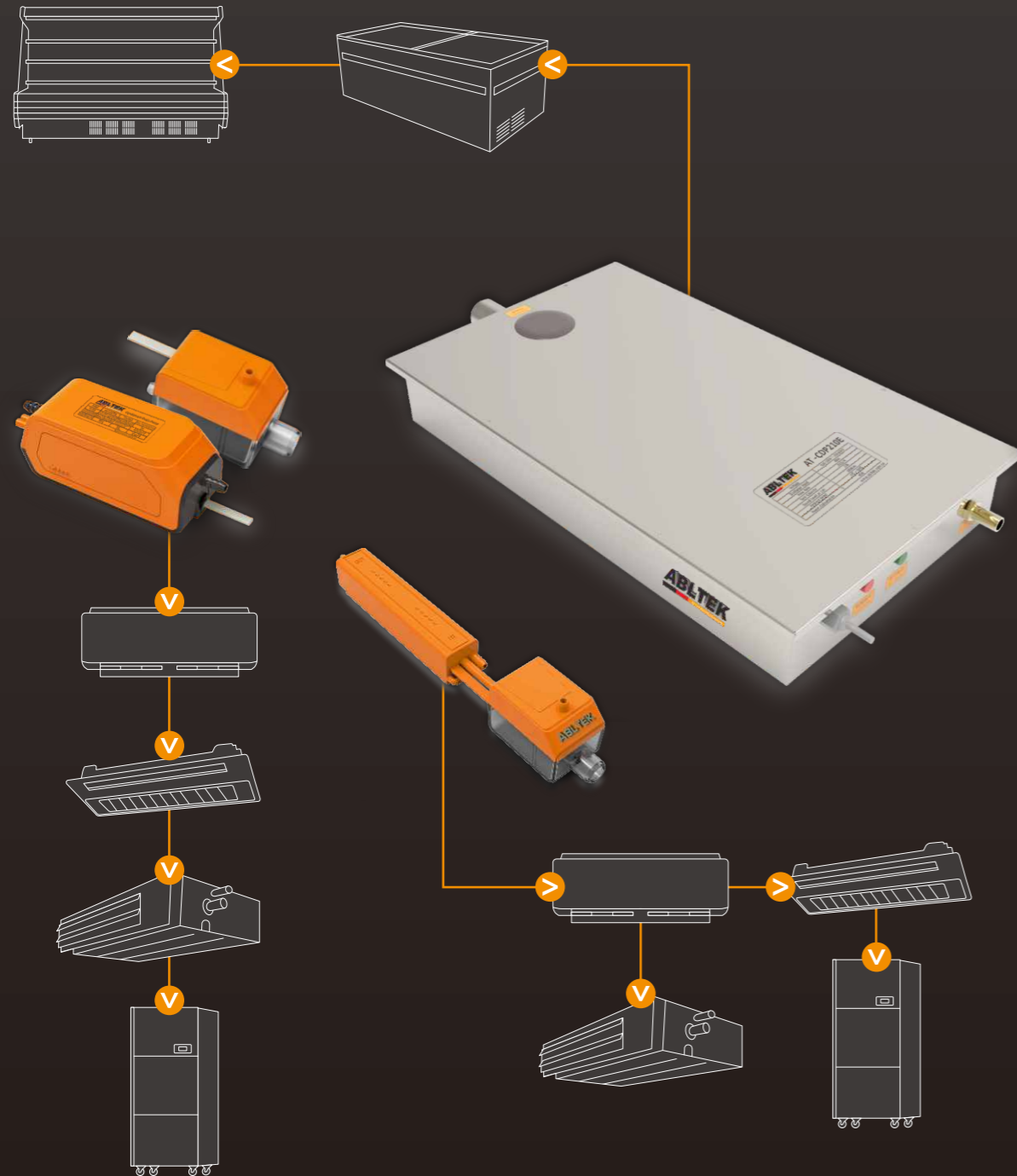
Controller System Application For Refrigeration

035-036	Digital Thermostat
037-038	Cold Room Electric Control Box

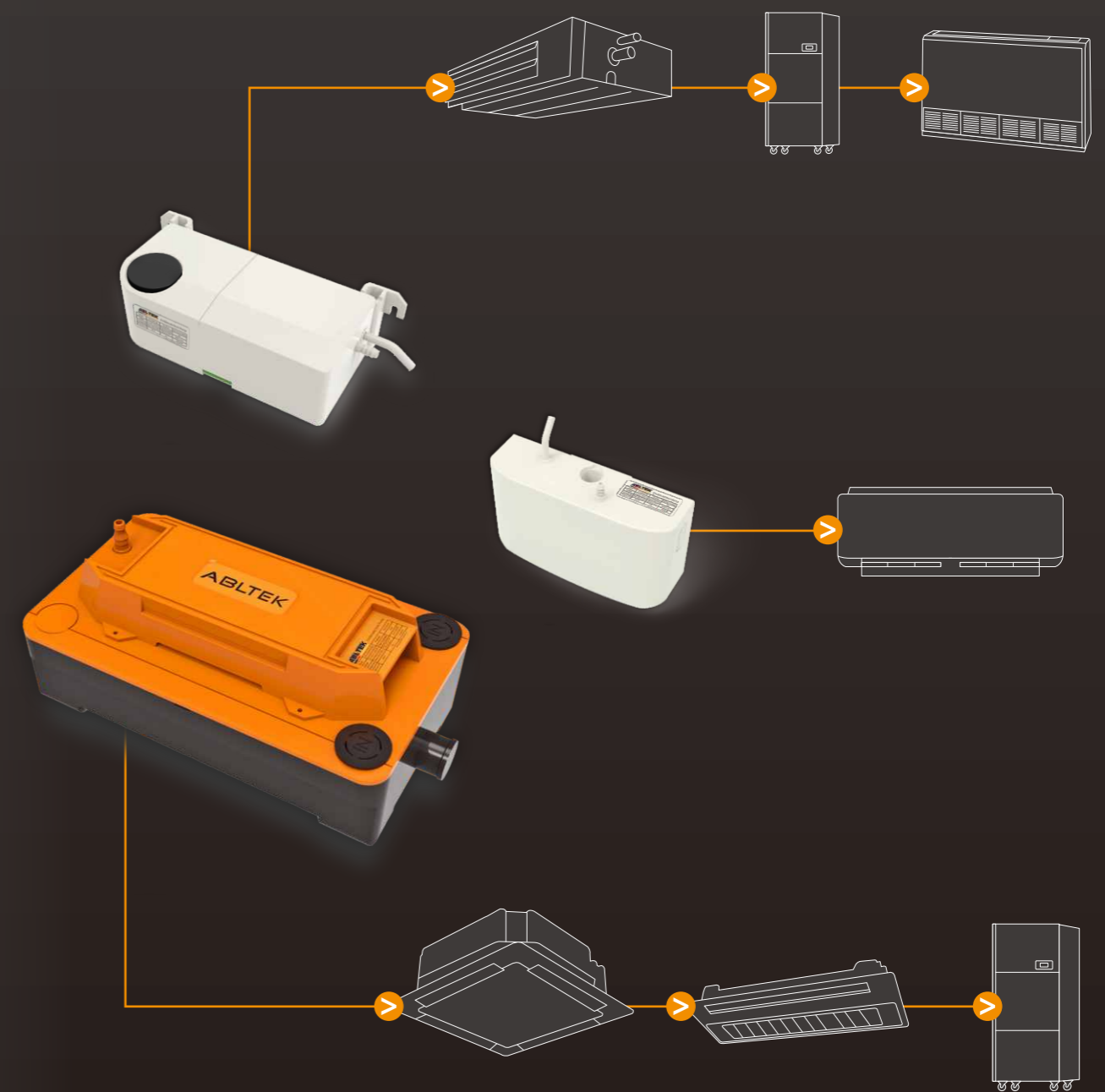
ABLTEK

Devoted to be Delicate · Create the World-Class Quality

Drain Water Expertor Application For AC / Refrigeration / Dehumidifier






精工细铸
Devoted to be Delicate

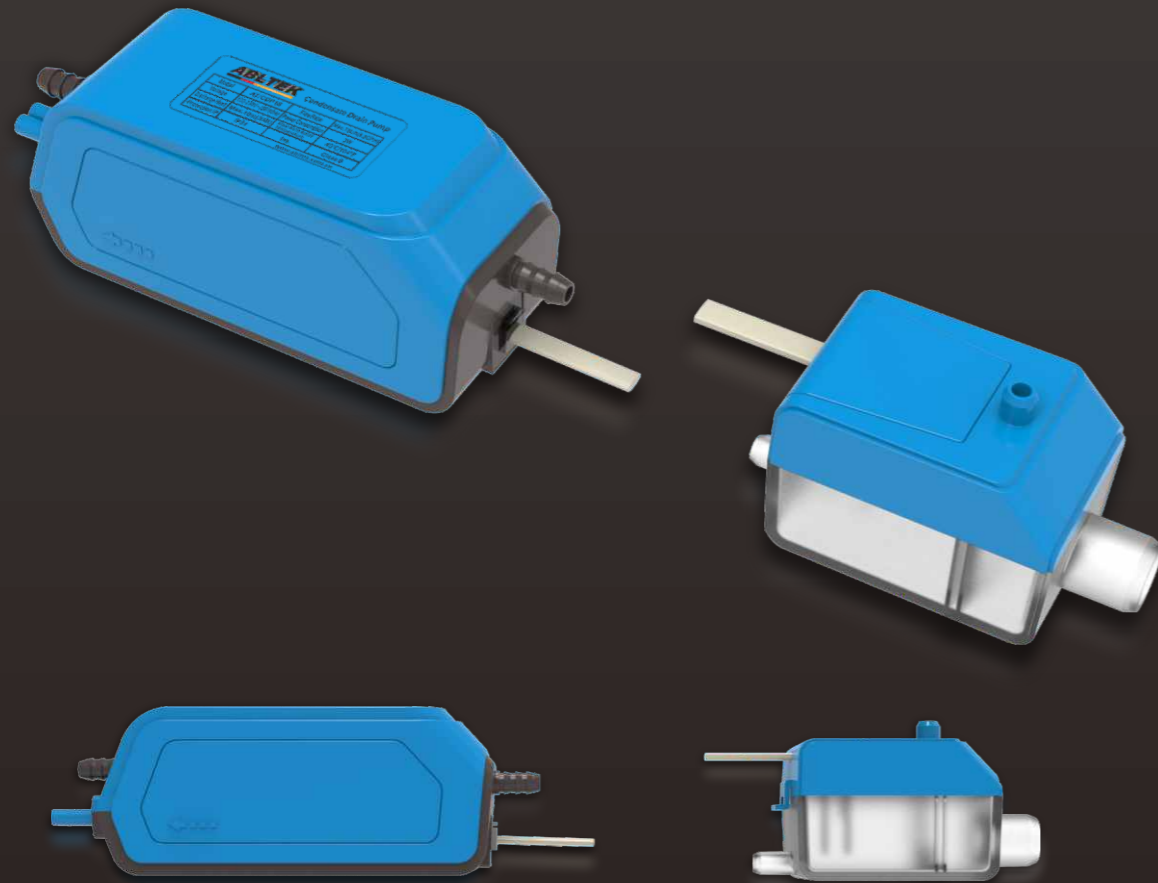


打造世界级品质
Create the World-Class Quality

Condensate Drain Pump ----- Selection Guide

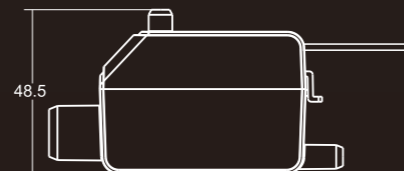
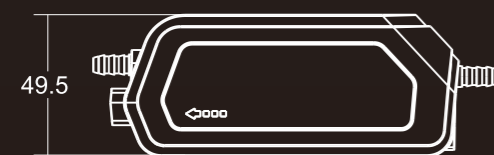
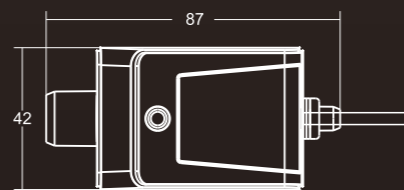
Selection Guide			System Types						Specifications at 230 V 50Hz				Mounting					
											Max Flow(L/hr)	Recommended Max Height (m)	Sound Level (dB(A))	Max kW of Unit	In the Gutter	Inside the Unit	In Remote	Under the Unit
			Cassette	Wall mount	Conduit	Fake roof	Dehumidifier	Floor Mount	Display Case Fresh Produce	Chests								
Mini Silent Condensate Drain Pump		AT/CDP18A		√	√	√	√			18	10	19	8	*	*	*		
		AT/CDP36A		√	√	√	√			36	10	21	15	*	*	*		
Mini Slim Condensate Drain Pump		AT/CDP15F		√	√	√	√			15	10	19	8	*	*	*		
Mini White Condensate Drain Pump		AT/CDP18B		√						18	10	19	8				*	
		AT/CDP36B		√						36	10	21	15				*	
Mini Tank Condensate Drain Pump		AT/CDP18C			√		√	√		18	10	19	8		*			
		AT/CDP36C			√		√	√		36	10	21	15		*			
Max Flow Condensate Drain Pump		AT/CDP200D	√		√		√			200	5	-	-				*	
Supermarket Low Profile Condensate Drain Pump		AT-CDP210E						√	√	210	48	60	-		*		*	

Mini Silent Condensate Drain Pump



AT/CDP18A

AT/CDP36A



→ Technical data

MODEL	AT/CDP18A	AT/CDP36A
Voltage	100-230VAC /50-60HZ	
Discharge Head	Max.10m(33ft)	
Flow Rate	Max.18L/h(4.8GPH)	Max.36L/h(9.6GPH)
Tank Capacity	35ML	
Mini Splites up to	8KW(30000btu/hr)	15KW(45000btu/hr)
Sound Level at 1m	19dB(A)	21dB(A)
Ambient temp	0°C ~ 50°C	
Power Consumption	3W	

→ Suitability

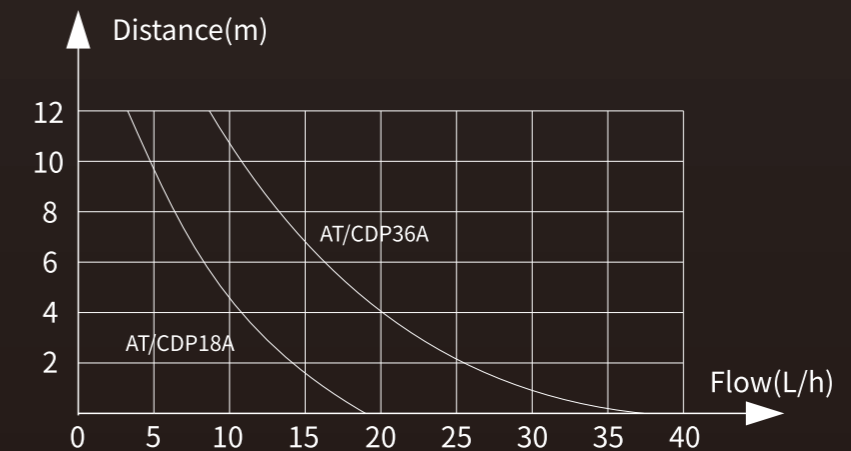
Smaller commercial & Domestic units ner, windows and doors, kitchen, etc

→ Advantage

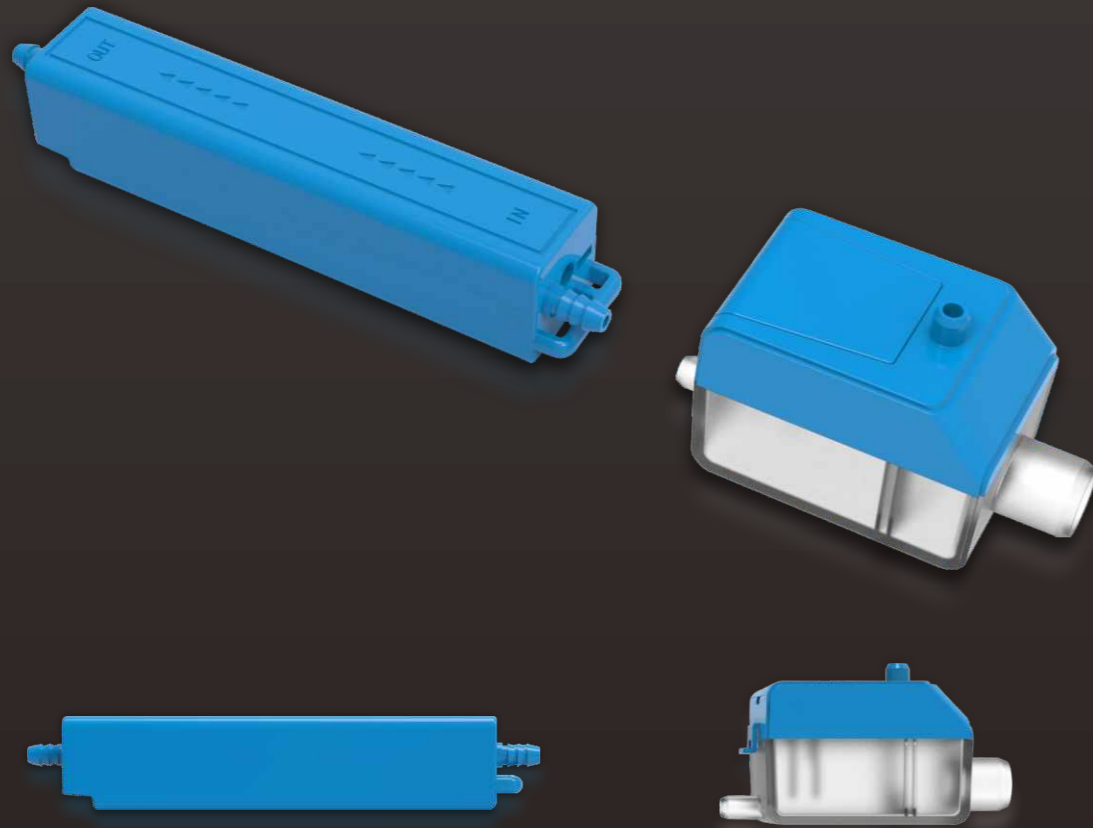
- Ultra-quiet design
- High head meets various application needs
- Quick and convenient connection
- Efficient water pump, strong power
- Probe type control, higher reliability

The drain pump and the water storage tank are designed to be separated, and the 1.5m high-quality flexible cable is quickly plugged in, which is safe and reliable.

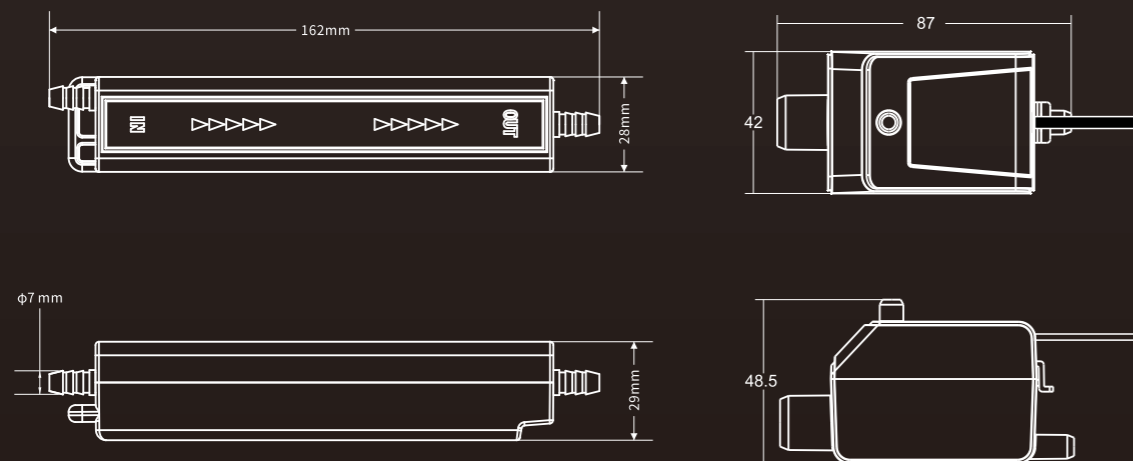
→ Flow Diagram



Mini Slim Condensate Drain Pump



AT/CDP15F



→ Technical data

Model	AT/CDP15F
Voltage	100V-230VAC/50-60Hz
Maximum Recommended Distance	10meter
Maximum Flow	15L/H
Storage Tank Capacity	35ml
Maximum Cooling Capacity	30000btu/hr(less than 3HP)
Noise At 1 meter	19dB(A)
Applicable Environment Temperature	0°C ~50°C

→ Suitability

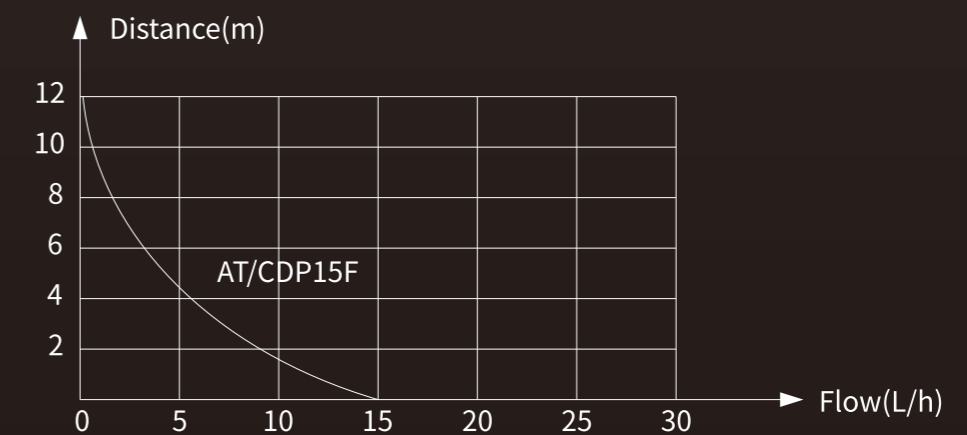
Smaller commercial & Domestic units ner, windows and doors, kitchen, etc

→ Advantage

Ultra-quiet design
High head meets various application needs
Quick and convenient connection
Efficient water pump, strong power
Probe type control, higher reliability

The drain pump and the water storage tank are designed to be separated, and the 1.5m high-quality flexible cable is quickly plugged in, which is safe and reliable.

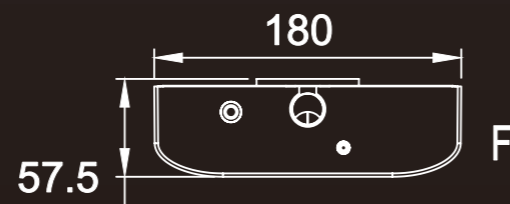
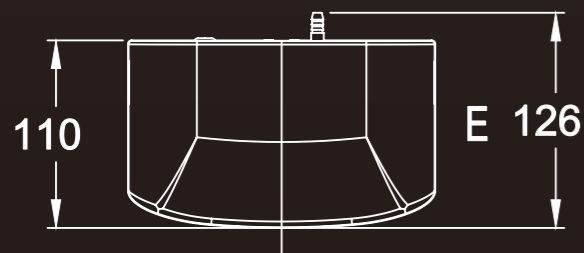
→ Flow Diagram



**Mini White
Condensate Drain Pump**



AT/CDP18B AT/CDP36B



➔ **Technical data**

MODEL	AT/CDP18B	AT/CDP36B
Voltage	100-230VAC /50-60HZ	
Discharge Head	Max.10m(33ft)	
Flow Rate	Max.18L/h(4.8GPH)	Max.36L/h(9.6GPH)
Tank Capacity	250ML	
Mini Splites up to	8KW(30000btu/hr)	15KW(45000btu/hr)
Sound Level at 1m	19dB(A)	21dB(A)
Ambient temp	0°C ~ 50°C	
Power Consumption	3W	

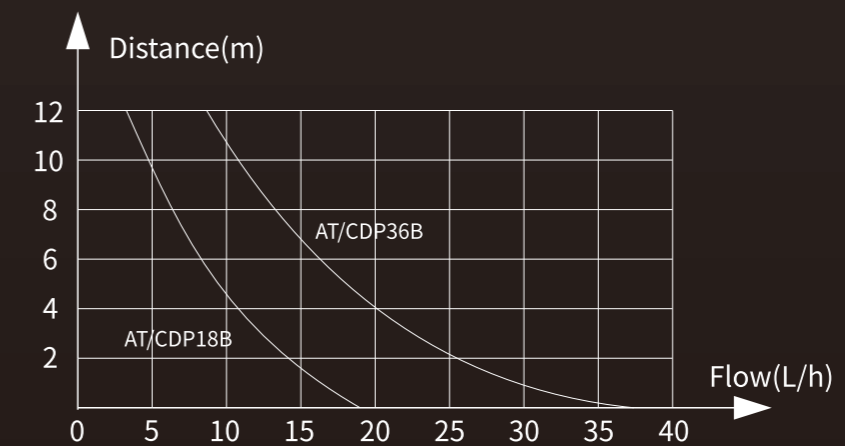
➔ **Suitability**

High wall mini split systems Perfect for...
Domestic use... where easy maintenance is key

➔ **Advantage**

Ultra-quiet design
High head meets various application needs
Quick and convenient connection
Efficient water pump, strong power
Probe type contr

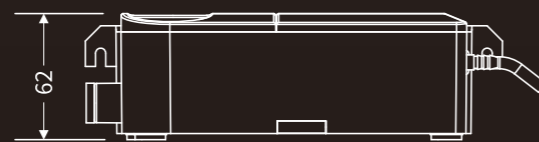
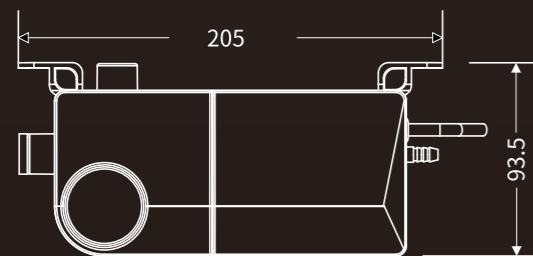
➔ **Flow Diagram**



Mini Tank Condensate Drain Pump



AT/CDP18C AT/CDP36C



→ Technical data

MODEL	AT/CDP18C	AT/CDP36C
Voltage	100-230VAC/50-60HZ	
Discharge Head	Max.10m(33ft)	
Flow Rate	Max.18L/h(4.8GPH)	Max.36L/h(9.6GPH)
Tank Capacity	170ML	
Mini Splites up to	8KW(30000btu/hr)	15KW(45000btu/hr)
Sound Level at 1m	19dB(A)	21dB(A)
Ambient temp	0°C~50°C	
Power Consumption	3W	

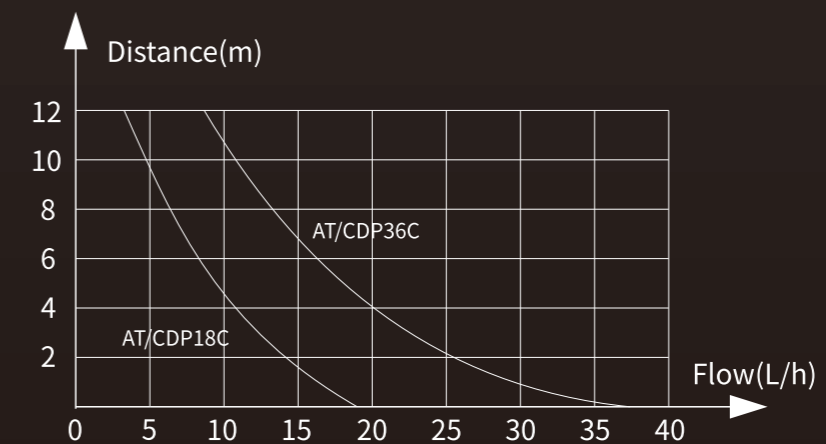
→ Suitability

Ducted units; Floor standing & chassis units;
Cassette units Perfect for... Installation versatility

→ Advantage

Ultra-quiet design
High head meets various application needs
Quick and convenient connection
Efficient water pump, strong power
Probe type contr

→ Flow Diagram



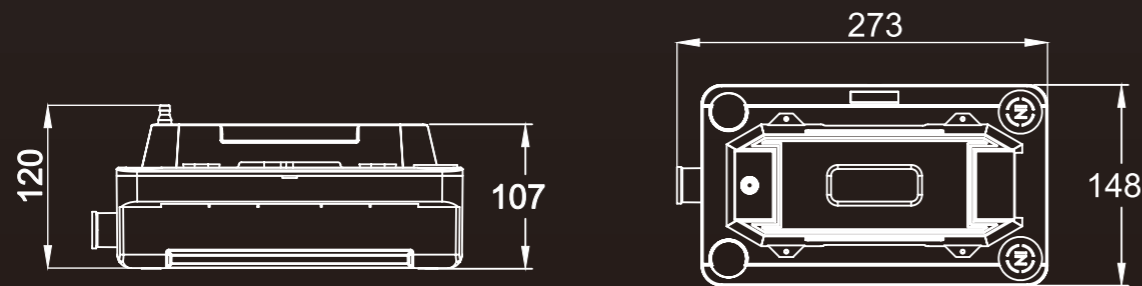
ABLTEK

Devoted to be Delicate · Create the World-Class Quality

**Max Flow
Condensate Drain Pump**



AT/CDP200D



➔ **Technical data**

MODEL	AT/CDP200D
Voltage	100-230VAC/50-60HZ
Discharge Head	MAX.5m
Flow Rate	200L/H
Tank Capacity	1.8L
Ambient temp	0°C ~ 50°C
Power Consumption	24W

➔ **Suitability**

Ducted units; Floor standing & chassis units; Cassette units

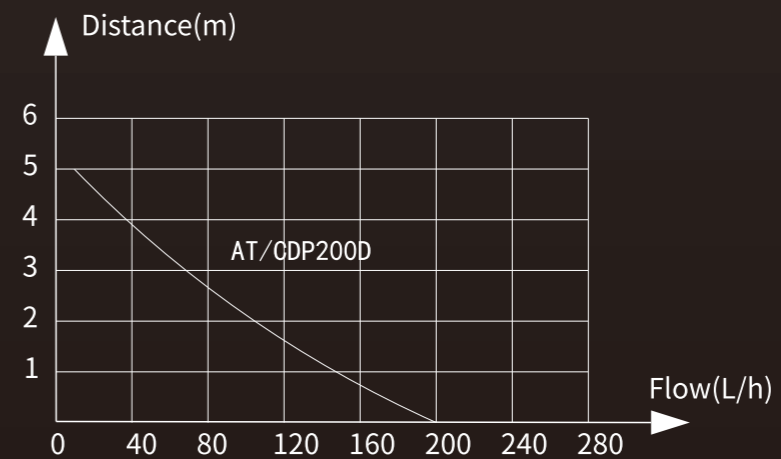
➔ **Advantage**

Ultra-quiet design
High head meets various application needs
Probe type control, higher reliability
Efficient water pump, strong power

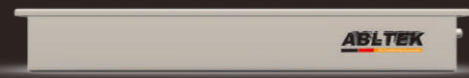
➔ **Description**

It adopts integrated design of drainage pump and water storage tank, horizontal placement, convenient and quick, large capacity water tank, brushless water pump is more efficient.

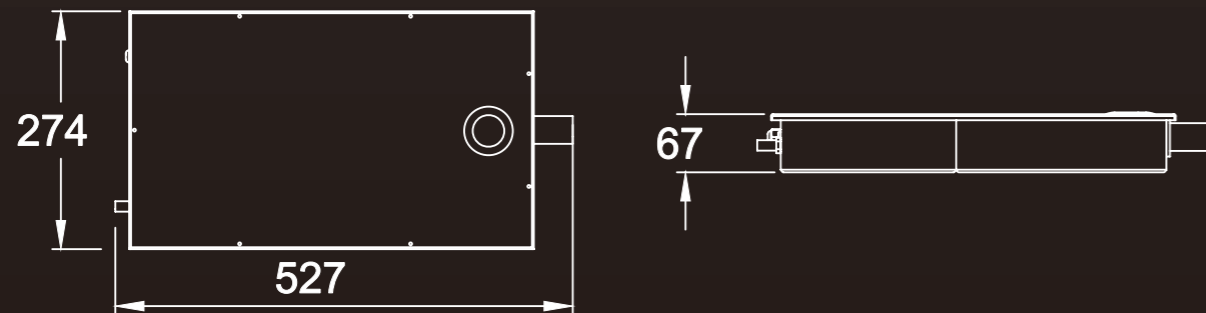
➔ **Flow Diagram**



Supermarket Low Profile Condensate Drain Pump



AT/CDP210E



→ Technical data

MODEL	AT -CDP210E
Voltage	100-230VAC/50 -60HZ
Discharge Head	48m
Flow Rate	210L/H
Tank Capacity	2.5L
Sound Level at 1m	60dB(A)
Ambient temp	0°C ~ 50°C
Power Consumption	45W

→ Suitability

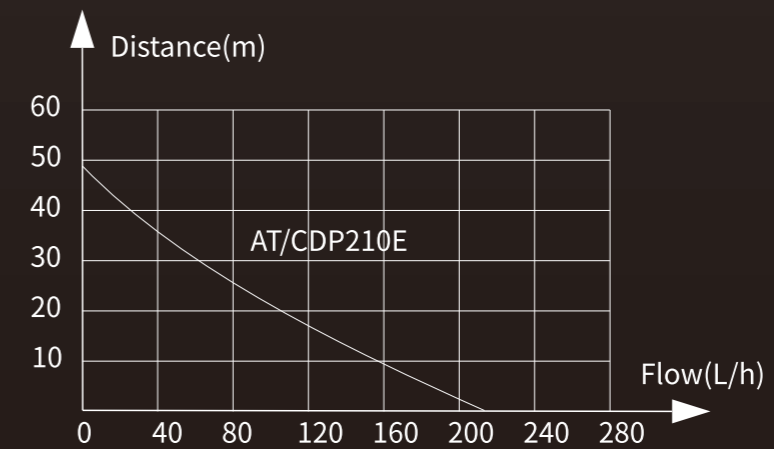
Single or multiple refrigeration units

→ Advantage

Low Profile
Ultra-quiet design
High head meets various application needs
Probe type control, higher reliability

→ Description

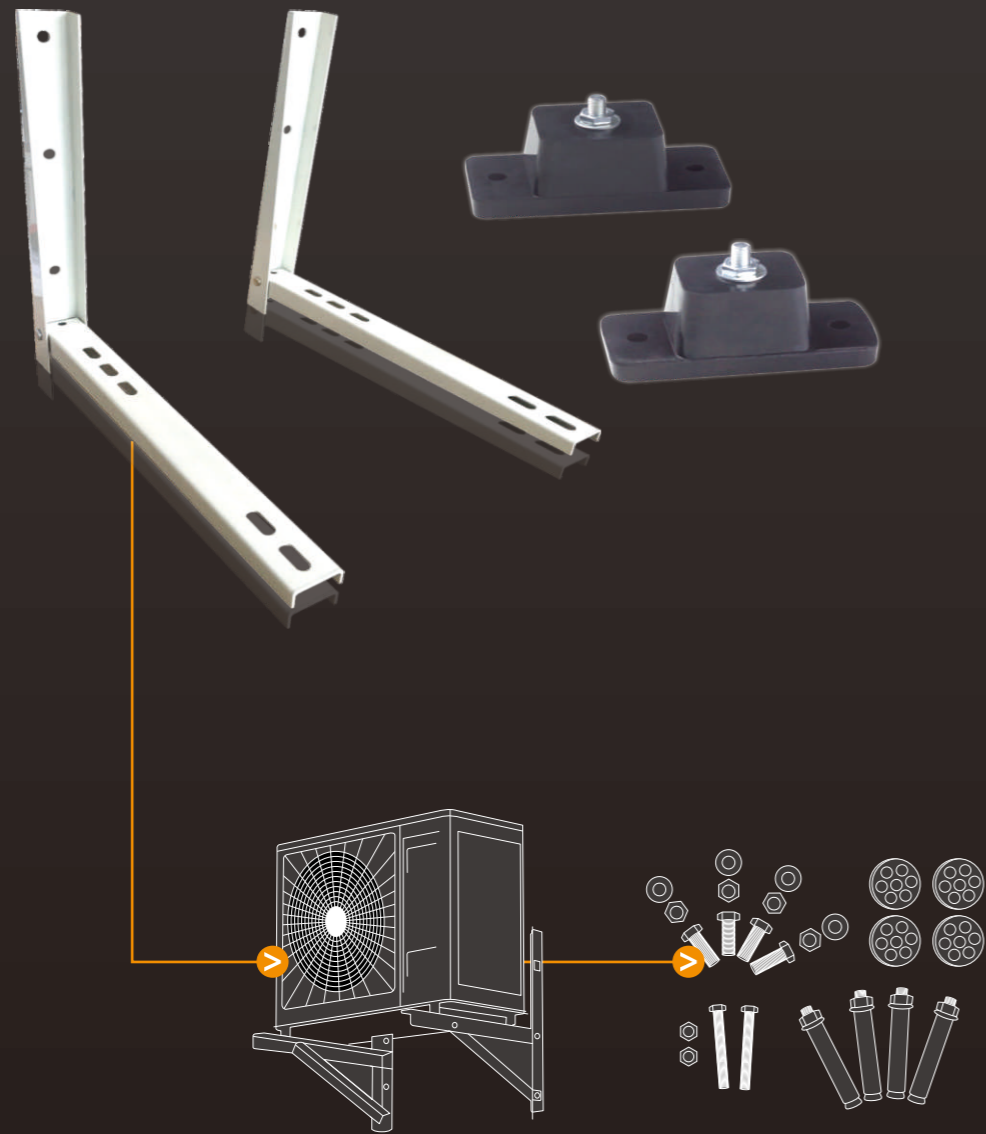
A superior stainless steel refrigeration pump built to last. Designed to fit beneath refrigeration units, it pumps away defrost water and filters debris.



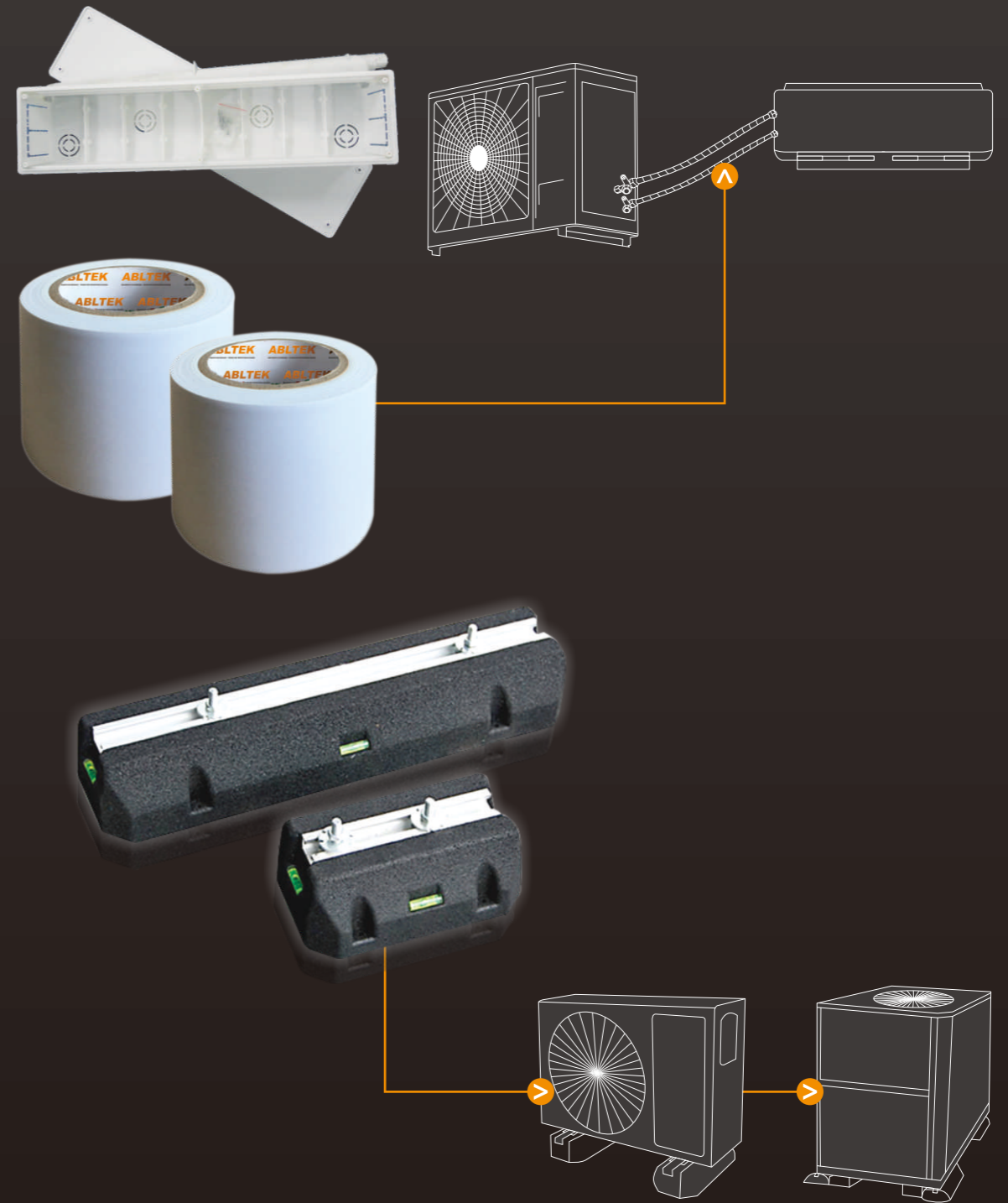
ABLTEK

Devoted to be Delicate · Create the World-Class Quality

Accessories Series Application For Air Condition



精工细铸
Devoted to be Delicate

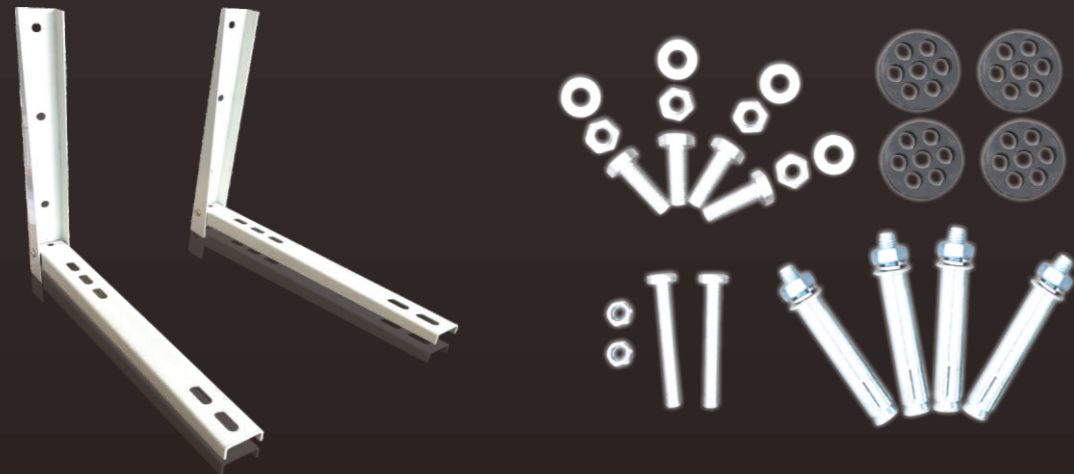


打造世界级品质
Create the World-Class Quality

AC Bracket

→ Description

Cold rolled plate is sprayed with plastic
 Fast and easy to mount.
 Competitive price
 Light to carry
 Anti-Vibration feet kit and strong screws are optional



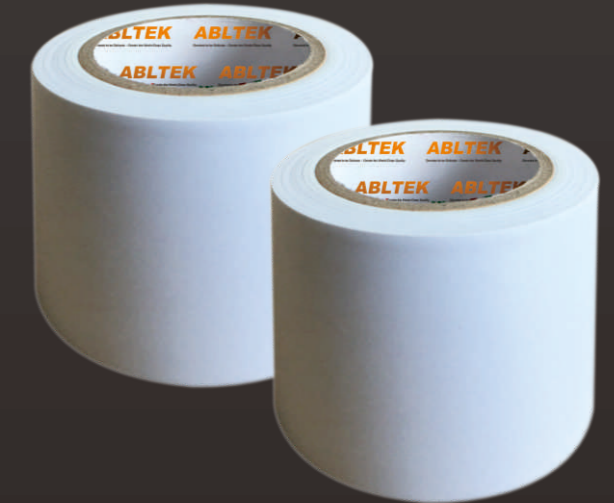
→ Technical data

Model	Bottom Length (mm)	Vertical Length (mm)	Thickness (mm)	N.W. (kg)	G.W. (kg)	Loading (kg)	QTY/CTN	N.W.	G.W	Packing Dimension
AT/ACB-400	400	365	1.8	1.7	1.7	150	10	17	17.5	450x120x295
AT/ACB-450	450	400	1.8	1.9	2	150	10	20	20.5	500x140x330
AT/ACB-500	500	400	2	2.6	3.1	150	6	18.6	19.1	550x170x200
AT/ACB-550	550	400	2	3	3.5	150	6	21	20.5	600x170x200
AT/ACB-600	600	500	2	4	4.5	200	6	27	27.5	650x170x200

Air-Conditioning Tape

→ Description

Mainly for pipe protection
 light and heavy packaging ,carpet fixing
 construction applications
 good choice for bunding
 good choice for general maintenance
 good choice for pipe wrapping
 good choice for air conditioning ducts



→ Technical data

Pattern	Model	Color	Dimension (L*W*T)	Rank	Inside Circle
Smooth	AT-10*45*0.1W	White	10m*45mm*0.1mm	A	F38
Smooth	AT-10*48*0.1W	White	10m*48mm*0.1mm	A	F38
Smooth	AT-10*50*0.1W	White	10m*50mm*0.1mm	A	F38
Smooth	AT-15*45*0.1W	White	15m*45mm*0.1mm	A	F38
Smooth	AT-15*48*0.1W	White	15m*48mm*0.1mm	A	F38
Smooth	AT-15*50*0.1W	White	15m*50mm*0.1mm	A	F38
Embossed	AT-10*45*0.15EY	Yellow	10m*45mm*0.15mm	A	F38
Embossed	AT-10*48*0.15EY	Yellow	10m*48mm*0.15mm	A	F38
Embossed	AT-10*50*0.15EY	Yellow	10m*50mm*0.15mm	A	F38
Embossed	AT-15*45*0.15EY	Yellow	15m*45mm*0.15mm	A	F38
Embossed	AT-15*48*0.15EY	Yellow	15m*48mm*0.15mm	A	F38
Embossed	AT-15*50*0.15EY	Yellow	15m*50mm*0.15mm	A	F38
Embossed	AT-10*45*0.18EG	Grey	10m*45mm*0.18mm	A	F38
Embossed	AT-10*48*0.18EG	Grey	10m*48mm*0.18mm	A	F38
Embossed	AT-10*50*0.18EG	Grey	10m*50mm*0.18mm	A	F38
Embossed	AT-15*45*0.18EG	Grey	15m*45mm*0.18mm	A	F38
Embossed	AT-15*48*0.18EG	Grey	15m*48mm*0.18mm	A	F38
Embossed	AT-15*50*0.18EG	Grey	15m*50mm*0.18mm	A	F38
Embossed	AT-10*45*0.18EW	white	10m*45mm*0.18mm	A	F38
Embossed	AT-10*48*0.18EW	white	10m*48mm*0.18mm	A	F38
Embossed	AT-10*50*0.18EW	white	10m*50mm*0.18mm	A	F38
Embossed	AT-15*45*0.18EW	white	15m*45mm*0.18mm	A	F38
Embossed	AT-15*48*0.18EW	white	15m*48mm*0.18mm	A	F38
Embossed	AT-15*50*0.18EW	white	15m*50mm*0.18mm	A	F38

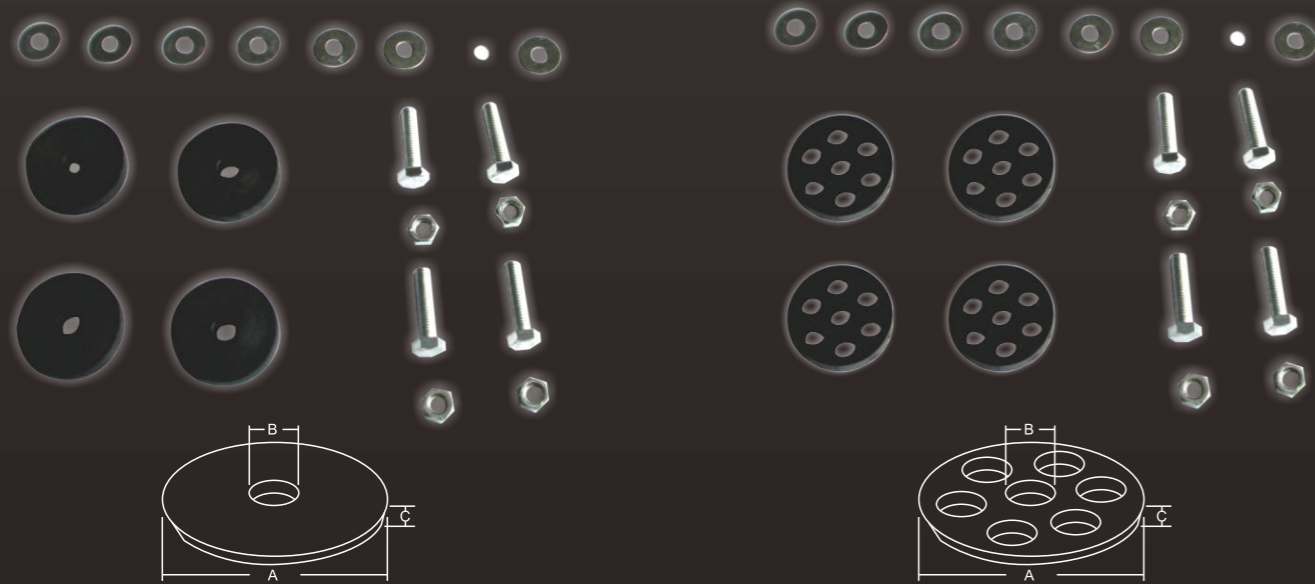


Devoted to be Delicate · Create the World-Class Quality

Anti-vibrations Feet For Wall Support

→ Description

Fast and easy to mount.
Competitive price



Model	Dimension(mm)			
	A	B	C	D
AT-AFW-07-P	40	9	8	

Model	Dimension(mm)			
	A	B	C	D
AT-AFW-08-P	33	5		



Model	Dimension(mm)			
	A	B	C	D
AT-AFW-01-R	108	50	52	42

Model	Dimension(mm)			
	A	B	C	D
AT-AFW-01-P	112	50	53	42

One Piece Heat Pump Risers

Sturdy and stable, Abltek's Heat Pump Riser provides the desired elevation for condensers, heat pumps, and air handlers. The one piece, heavy duty plastic unit is manufactured in three heights. Butyl mastic on the top and bottom guarantees no slipping and reduced vibration and noise

→ Technical data

CATALOG NO.	DESCRIPTION
AT/HPR-3	Riser-3"
AT/HPR-6	Riser-6"
AT/HPR-13	Riser-12"

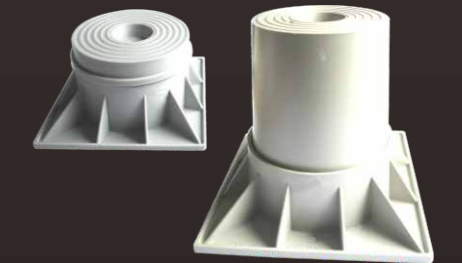


Two Piece Heat Pump Risers

Sturdy and stable, Abltek's Heat Pump Riser provides the desired elevation for condensers, heat pumps, and air handlers. The one piece, heavy duty plastic unit is manufactured in heights and an extension. Butyl mastic on the top and bottom guarantees no slipping and reduced vibration and noise

→ Technical data

CATALOG NO.	DESCRIPTION
AT/HPR-3-2P	two piece Riser-3"
AT/HPR-6-2P	two piece Riser-6"
AT/HPR-3-2PG	two piece Black Riser-3"(Charcoal)
AT/HPR-6-2PG	two piece Black Riser-6"(Charcoal)
AT/HPR-EXT	4"Extension

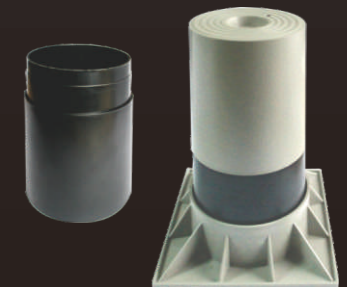


Heat Pump Extension Risers

The one piece, heavy duty plastic unit is manufactured in heights and an extension

→ Technical data

CATALOG NO.	DESCRIPTION
AT/HPR-EXT	4"Extension

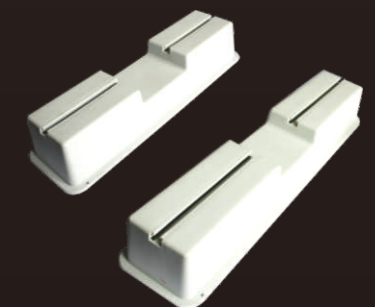


Base Pad

Used as a mounding base when condensing units must be bolted down. Maximum load capacity is 220 lbs. per pad sliding rail design for easy and fast installation. Includes mounting bolts. Available in 14" and 17" lengths. Ivory color.

→ Technical data

CATALOG NO.	DESCRIPTION
AT/BP-23014W	14"Base Pad, pack of 2
AT/BP-23017W	17"Base Pad, pack of 2




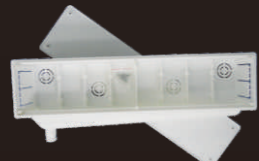
Embedded Pre-installation Box

→ Description

1. Embedded in the designed position of the wall when construction
2. Directly connect to the air-conditioner not to drill the wall when installation
3. Water outlet direction adjustable.



→ Technical data

Model	picture	name	PCS/box	size(mm)		
				L	W	H
2		Horizontal outlet	20	435	130	70
3		Vertical outlet	20	435	157	70

Outdoor Air Conditioner Rubber Ground Base Bracket



→ Technical data

Air Conditioner support bracket rubber Foot Pad

Model	Loading (kg/set)	Size L*W*H (mm)	Aluminum tank length (mm)	Packing	Accessories
AT/RF250S	200	250*130*60	220	2pcs/set	2 pcs fixing screw
AT/RF400	300	400*130*60	377	2pcs/set	4 pcs fixing screw
AT/RF500	400	500*130*60	470	2pcs/set	4 pcs fixing screw
AT/RF450	500	450*160*95	410	2pcs/set	4 pcs fixing screw
AT/RF600	600	600*160*95	570	2pcs/set	4 pcs fixing screw
AT/RF1000	1000	1000*160*95	962	2pcs/set	4 pcs fixing screw



Rubber Ground Base is made of SBR Vulcanized compound (UV Resistant)

A complete of extruded aluminum channel with standard

Used to support air conditioning units, pipe work system, ductworks runs and cable trays

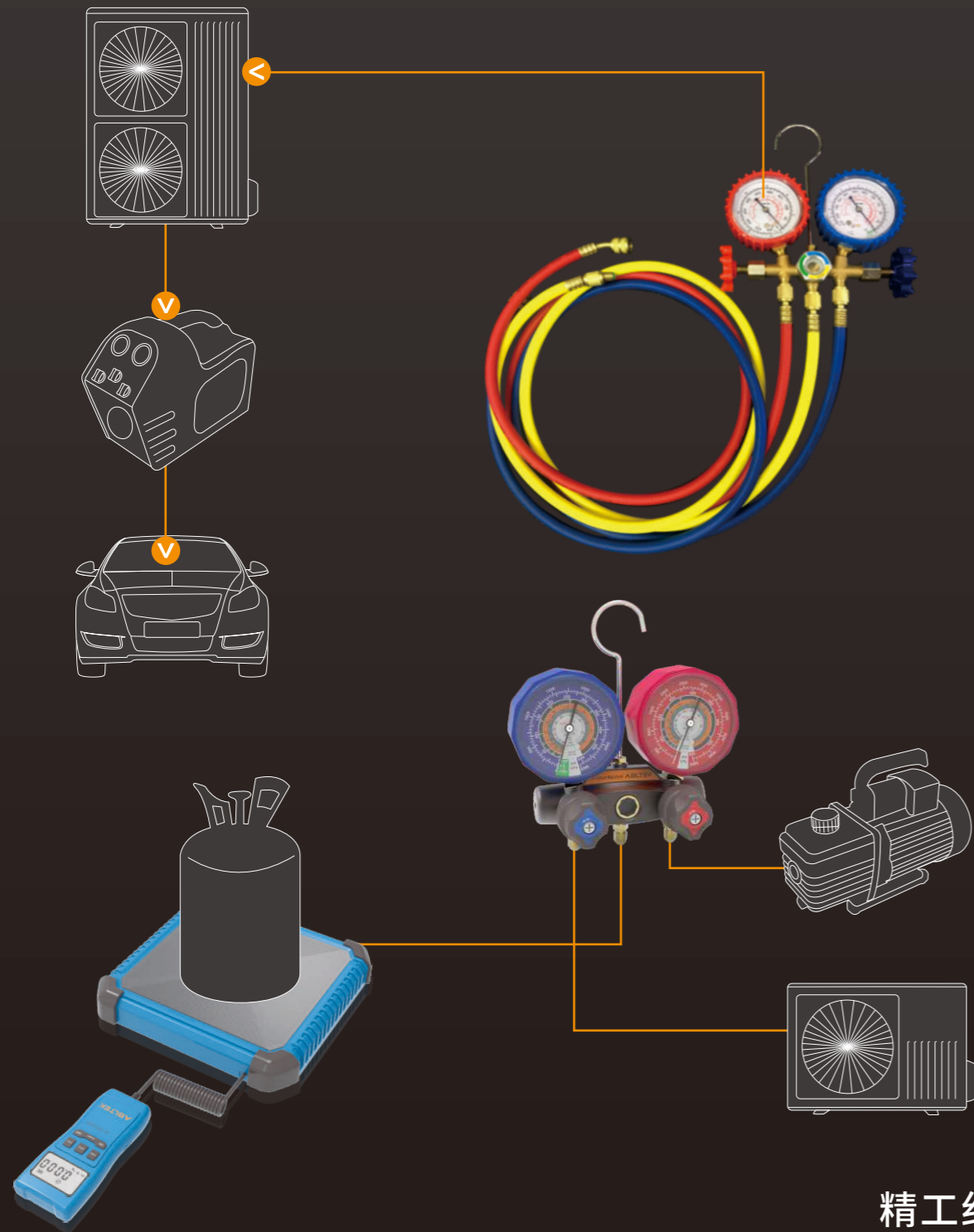
Supplies complete of fixing screws and bubble level control for horizontal installation.

Working Conditions: -40°C to 80°C

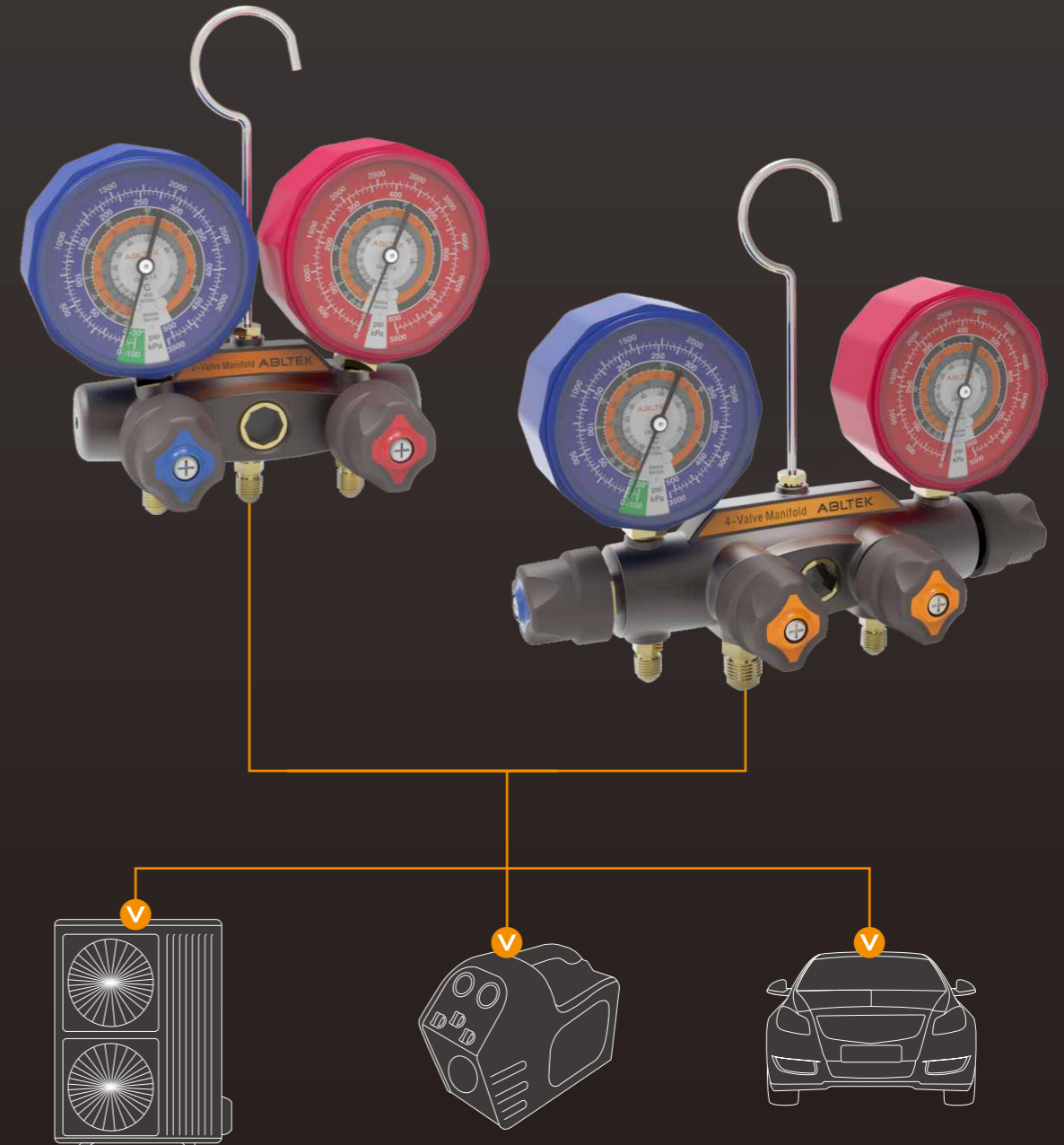
ABLTEK

Devoted to be Delicate · Create the World-Class Quality

Charging Refrigerant System Application For AC / Refrigeration



精工细铸
Devoted to be Delicate

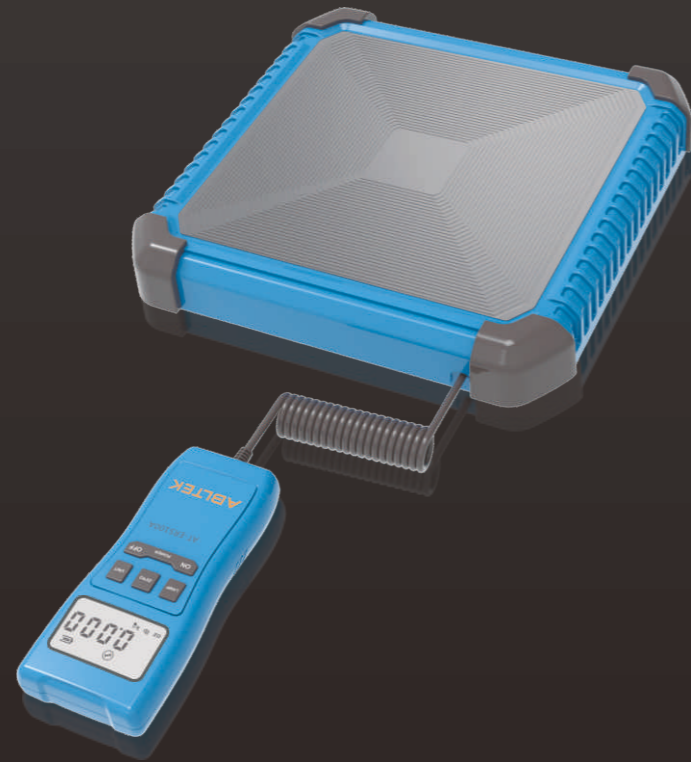


打造世界级品质
Create the World-Class Quality

ABLTEK

Devoted to be Delicate · Create the World-Class Quality

Electronic Refrigerant Scale



→ Features

Model:AT/ERS-100A

Molded with aeronautical aluminum alloy, not deform in long-term use.
 Embedded design for the bottom of the scale, with hand-held device inside.
 Rubber corner armors prevent external shock, It's your first choice of high performance scale!

 Power indication

"POWER" Press to turn on the scale;press and hold for 3s to turn it off

"ZERO" Press to zero out current reading on display

"UNIT" Press to switch between "Kg" , "Oz" , "Lb"

→ Technical data

MODEL	Max capacity	Resolution	Accuracy	Power supply	Operation temperature range	Product size
AT/ERS-100A	100KG	5g	± 0.05%rdg+10g	5 AAA batteries	0°C-40°C	271*271*74mm

Programmable Refrigerant Scale



→ Features

Model:AT/ERS-100B

Precise measurement
 High performance large flow solenoid valve (only 40 seconds per 1 kg refrigerant flow)
 LCD backlight digital display, the backlight display is clearer
 Quantitative filling precision control
 Lighter, Easy to carry

→ Technical data

MODEL	Max capacity	Resolution	Accuracy	Power supply	Operation temperature range	Product size
AT/ERS-100B	100KG (220Lb)	5g/2g	± 0.05%rdg+10g	5 AA batteries	0°C-40°C	270*270*70mm

2-Valve Forged Aluminum Manifolds

➔ Description

Forged aluminum alloy body makes this unit lightweight for handling ease with the durability and reliability required for repeated use. 1.6% accuracy (Class 1.6) gauges

Front access for easy field recalibration

Double "O" ring piston for reliability and long service life

Exclusive 100 mesh filter in-line on all flare fittings helps keep out particulate material and extend the life of the seats

Contoured easy-grip handles for positive control; color-coded for ready identification

Sight glass to easily view refrigerant movement and condition during charging and recovery

Heavy duty hook won't pull out

Manifold and hose holder fittings all 1/4" unless otherwise identified

➔ Technical data

MODEL	length	Working Pressure /Burst (psi)	Connection	designed for refrigerant
AT-F2M36RYB	36"	500-2500	1/4"×1/4"	R-22
AT-F2M60RYB	60"	500-2500	1/4"×1/4"	R-22
AT-F2M72RYB	72'	500-2500	1/4"×1/4"	R-22
AT-F2M36RYB-S	36"	600-3000	1/4"×1/4"	R134
AT-F2M60RYB-S	60"	600-3000	1/4"×1/4"	R134
AT-F2M72RYB-S	72'	600-3000	1/4"×1/4"	R134
AT-F2M36RYB-H	36"	800-4000	yellow 1/4"×1/4" blue red 1/4"×5/16"	R410A
AT-F2M60RYB-H	60"	800-4000	yellow 1/4"×1/4" blue red 1/4"×5/16"	R410A
AT-F2M72RYB-H	72'	800-4000	yellow 1/4"×1/4" blue red 1/4"×5/16"	R410A

Flowing refrigerant all are available:

R-12/22/502	R-134a/404A/407C	R-22	R22/134/410A	R-32/410A
R-12/22/134a	R-134a/404A/407F	R-22/407A/407C	R-22/134a/404A	R-410A
R-1234yf	R-134a/404A/507	R-22/407A/410A	R-22/404A/410A	R-417A/422A/422D
			R-22/410A	R-600

4-Valve Forged Aluminum Manifolds

➔ Description

Forged aluminum alloy body makes this unit lightweight for handling ease with the durability and reliability required for repeated use. 1% accuracy (Class 1) gauges

Front access for easy field recalibration

Double "O" ring piston for reliability and long service life

Fourth hose to enable connection to hi-/lo-sides, refrigerant tank and recovery unit or vacuum pump for diagnostics, evacuation and charging without switching hoses 3/8" Vacuum port for use with larger hose to cut evacuation time by up to 33% (all other fittings are 1/4") Large, easy-to-read 3-1/8" (90 mm) steel case red and blue, 1.6% accuracy (Class 1.6) gauges

Front access for easy field recalibration Double "O" ring piston for reliability and long service life

Exclusive 100 mesh filter in-line on all flare fittings helps keep out particulate material and extend the life of the seats

Contoured easy-grip handles for positive control; color-coded for ready identification

Sight glass to easily view refrigerant movement and condition during charging and recovery

Optional protective gauge boots available Heavy duty hook won't pull out

Also available with 3-1/2" (80 mm) red and blue liquid-filled gauges

Manifold and hose holder fittings 1/4"-3/8"-1/4"-1/4" unless otherwise identified

➔ Technical data

MODEL	length	Working Pressure /Burst (psi)	Connection	designed for refrigerant
AT-F4M36RYB	36"	500-2500	1/4"×1/4"	R-22
AT-F4M60RYB	60"	500-2500	1/4"×1/4"	R-22
AT-F4M72RYB	72'	500-2500	1/4"×1/4"	R-22
AT-F4M36RYB-S	36"	600-3000	1/4"×1/4"	R134
AT-F4M60RYB-S	60"	600-3000	1/4"×1/4"	R134
AT-F4M72RYB-S	72'	600-3000	1/4"×1/4"	R134
AT-F4M36RYB-H	36"	800-4000	yellow 1/4"×1/4" blue red 1/4"×5/16"	R410A
AT-F4M60RYB-H	60"	800-4000	yellow 1/4"×1/4" blue red 1/4"×5/16"	R410A
AT-F4M72RYB-H	72'	800-4000	yellow 1/4"×1/4" blue red 1/4"×5/16"	R410A

Flowing refrigerant all are available:

R-12/22/502	R-134a/404A/407C	R-22	R22/134/410A	R-32/410A
R-12/22/134a	R-134a/404A/407F	R-22/407A/407C	R-22/134a/404A	R-410A
R-1234yf	R-134a/404A/507	R-22/407A/410A	R-22/404A/410A	R-417A/422A/422D
			R-22/410A	R-600



Manifolds

2 Ways Brass Manifolds

→ Description

Forged body is solid brass for durability.
 Metal valve handles are full size for easy operation.
 Hose anchors are forged into back of body at 45°.
 Minimize needle pulsation for easier, more accurate readings.
 Quality
 Pretested :every manifold is individually tested for reliability before shipping.
 Limited Lifetime Warranty



→ Technical data

MODEL	Length	Working Pressure /Burst(psi)	Connection	Designed for Refrigerant
AT-536RYB	36"	500-2500	1/4"*1/4"	R12-22-502
AT-560RYB	60"	500-2500	1/4"*1/4"	R12-22-502
AT-572RYB	72'	500-2500	1/4"*1/4"	R12-22-502
AT-536RYB-S	36"	600-3000	1/4"*1/4"	R134A
AT-560RYB-S	60"	600-3000	1/4"*1/4"	R134A
AT-572RYB-S	72'	600-3000	1/4"*1/4"	R134A
AT-536RYB-H	36"	800-4000	yellow 1/4"*1/4" blue red 1/4"*5/16"	R410A
AT-560RYB-H	60"	800-4000	yellow 1/4"*1/4" blue red 1/4"*5/16"	R410A
AT-572RYB-H	72'	800-4000	yellow 1/4"*1/4" blue red 1/4"*5/16"	R410A

→ Description

Abltek hose have proven performance benefits of the original line, plus double Barrier protection for CFC, HCFC and HFC(R-404a,R134a,R-507,R-407C,R-410A, etc.)
 Operating temperature -20 F to 180 F (-28.8°C to 82.2°C)

Moisture barrier provides improved resistance to moisture

Charging Hose



→ Technical data

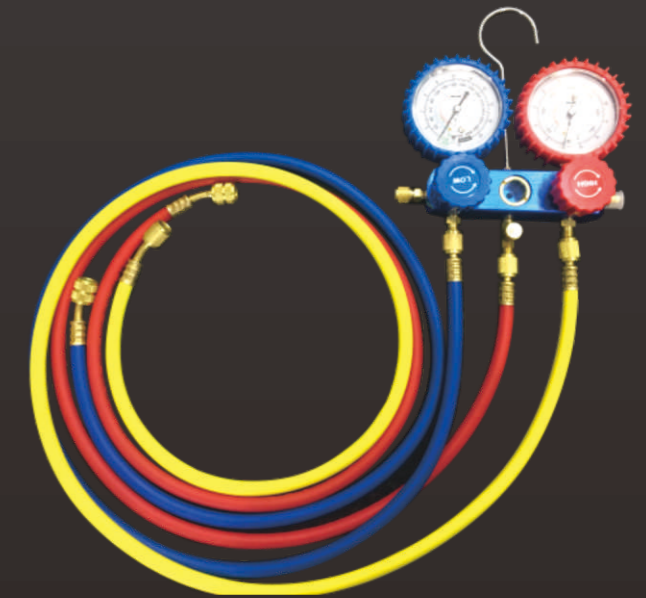
Length	Working Pressure /Burst (psi)		
	500-2500	600-3000	800-4000
36"	AT-336RYB	AT-336RYB-S	AT-336RYB-H
60"	AT-360RYB	AT-360RYB-S	AT-360RYB-H
72'	AT-372RYB	AT-372RYB-S	AT-372RYB-H

Manifolds

2 Ways Alumimum Manifolds

→ Description

This heavy-duty manifold features cast aluminum body and full sizes inetal handles.
 Simple and convenient for use
 Full porting for maximum refrigeration flow
 Excellent vacuum characteristics
 Oversized sight glass for easy viewing
 No-flutter gauge design
 liquid filled gauges;psi & bar unit;°F /°C



→ Technical data

MODEL	Length	Working Pressure /Burst(psi)	Connection	Designed for Refrigerant
AT-AM36RYB	36"	500-2500	1/4"*1/4"	R12-22-502
AT-AM60RYB	60"	500-2500	1/4"*1/4"	R12-22-502
AT-AM72RYB	72'	500-2500	1/4"*1/4"	R12-22-502
AT-AM36RYB-S	36"	600-3000	1/4"*1/4"	R134A
AT-AM60RYB-S	60"	600-3000	1/4"*1/4"	R134A
AT-AM72RYB-S	72'	600-3000	1/4"*1/4"	R134A
AT-AM36RYB-H	36"	800-4000	yellow 1/4"*1/4" blue red 1/4"*5/16"	R410A
AT-AM60RYB-H	60"	800-4000	yellow 1/4"*1/4" blue red 1/4"*5/16"	R410A
AT-AM72RYB-H	72'	800-4000	yellow 1/4"*1/4" blue red 1/4"*5/16"	R410A

Flowing refrigerant all are available:

R-12/22/502	R-134a/404A/407C	R-22	R22/134/410A	R-32/410A
R-12/22/134a	R-134a/404A/407F	R-22/407A/407C	R-22/134a/404A	R-410A
R-1234yf	R-134a/404A/507	R-22/407A/410A	R-22/404A/410A	R-417A/422A/422D
			R-22/410A	R-600

ABLTEK

Devoted to be Delicate · Create the World-Class Quality

Cleaner Expertor Application For AC / Auto / Refrigeration



精工细铸
Devoted to be Delicate

打造世界级品质
Create the World-Class Quality

AC Wash Machine



→ Application Area

1. Household using like cleaning the air conditioner, windows and doors, kitchen, etc
2. Car and motorbike
3. School ,hospital, hotel and restaurant

→ Construction features and working principle

AC Wash Machine is manily consist of motor box, three cylinder plunger to form high pressure water flow and the wahsing surface can be flushed by the trigger type spray gun.

- It has a compact structure and light weight which is convenient to carry
- A low noise but strong cleaning ability with reliable performance
- Water and energy efficient
- Easy to maintain

→ Technical data

Model	Voltage	Max Flow Rate(L/Min)	Max Pressure (bar)	Power
AT/CP4B	100-230VAC/50-60HZ	4L/Min	3-5bar/7-10bar	100W

High Pressure AC Cleaner

→ Charactristic

- 20V lithium battery, durable and reliable
- High and low gear control, independent choice
- High pressure and large water volume, strong power
- Two battery capacities, more choices
- A variety of accessories to meet diverse needs

→ Technical Data

Model	AT/CP-25A
The Lithium Battery	20V-2.0AH
Working Pressure	6.5bar/25-40bar
Max Flow	3.0L/Min
Max Inlet Water Pressure	0.5Mpa
Motor Power	200W
Weight	1.6kg

**Wireless Cleaning
Strong Power**



Adjustable High Pressure Cleaner



⇒ Technical Data

Model	AT/CP5C
Voltage	220VAC/50HZ
Working Pressure	10-50bar (adjustable)
Max Flow	5L/min
Motor Power	1000W

⇒ Application Area

1. Suitable for families, such as cleaning air conditioners, doors, windows, kitchens, etc.
2. Suitable for cleaning cars and motorcycles
3. Suitable for schools, hospitals, hotels, restaurants and other public places

⇒ Construction features and working principle

AC washing machine is mainly composed of a motor box and a three-cylinder plunger to form a high-pressure water flow, which can flush and clean the surface with a trigger-type spray gun.

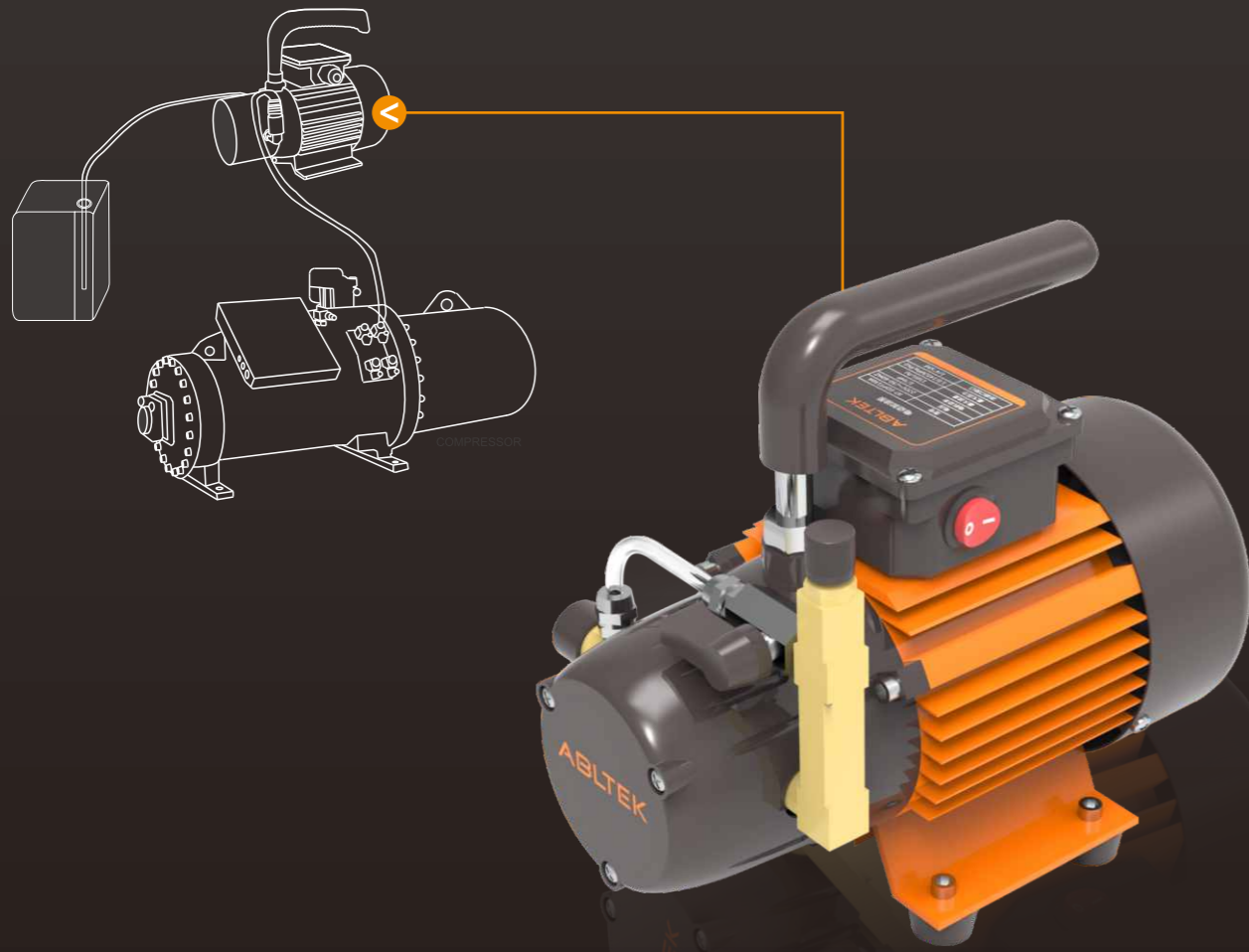
- Adjustable pressure
- Compact structure, light weight, easy to carry
- Low noise, strong cleaning ability, reliable performance
- Water saving and energy saving
- Easy to maintain



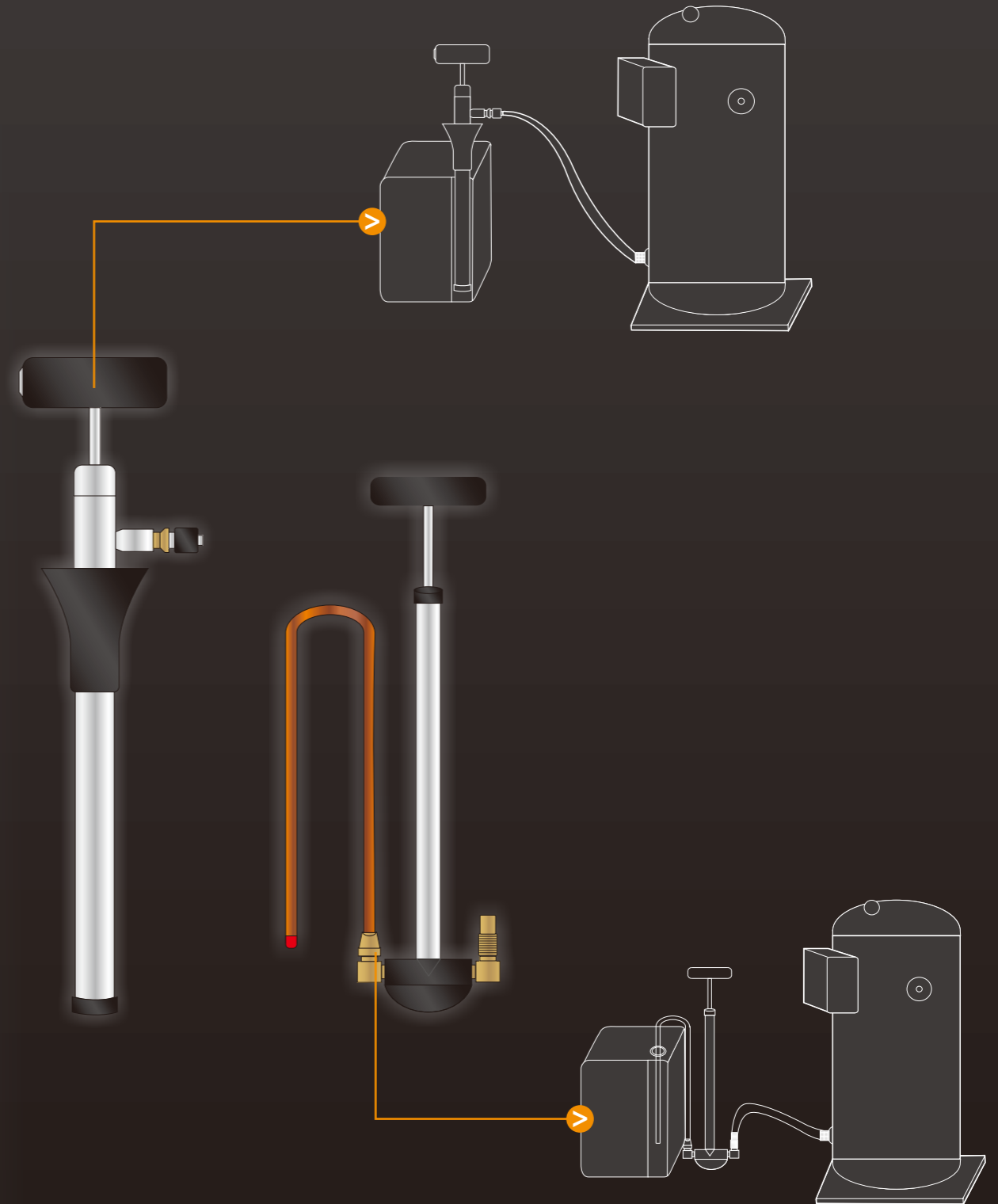
ABLTEK

Devoted to be Delicate · Create the World-Class Quality

Charging Expertor Application For Refrigeration



精工细铸
Devoted to be Delicate

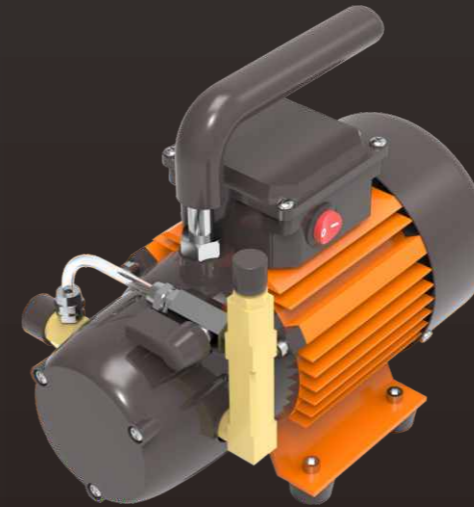
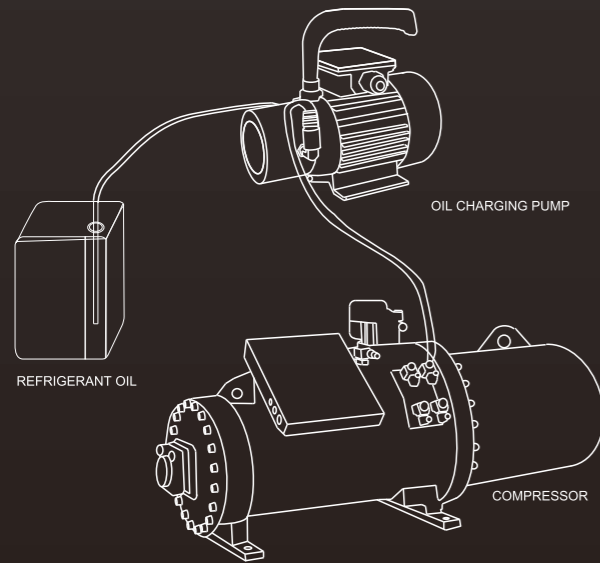


打造世界级品质
Create the World-Class Quality

Electric Oil Charing Pump

➔ Charactristic

- Suitable for small and medium refrigeration machine and A/C Unit
- Easy to observe the oil situation through transparent inlet hose
- Easy to carry ,only 5.5kgs weight
- With the thermal protector to avoid the motor overload
- Save time and labour



➔ Technical Data

Model	AT-EOTP90	AT-EOTP150
Voltage	230V~50/60HZ or 115V/60HZ	
Power	1/4hp	1/3hp
Max. Pump Against Pressure	175psi(1.2MPa)	232psi(1.6MPa)
Max. Pumprate	90 l/h	150 l/h
Fits Size Of Refrigeration Oil Containers	All Size	All Size
Hose Connect	1/4"SAE	1/4"&3/8"SAE

AT-OTP065 Series Mini Maxi-Transfer

Correspondent to Yellow Jacket: 77940 MAX-FLOW COMBINATION OIL PUMP

→ General Description

With Mini Maxi-Transfer oil transfer pump you can smoothly and easily transfer oil into the compressor on the down stroke while the compressor is under pressure. This make the oil transfer easier with a positive stroke.

→ Fuction

Remove oil for recovery and conversion Add oil to esisting system

→ Charasteristics

Pumps against 190 psi pressure
 Comfort&Easy Grip rubber handle (optional)
 Universal stopper automatically adjusts to all standard opening in 1",2-1/2" and 5 gallon
 Suction transfer hose and fittings included connects to bottom of unit to pump oil from equipment quickly and efficiently.
 Suitable for alkyl-benzene, ester-based, polyol ester, mineral and synthetic oils

→ Technical data

Model	AT-OTP065	AT-OTP110
Max.pump against pressure	200psi	250psi
Max.pump rate per stroke	50ml	75ml
Fits size of the refrigeration oil containers	All size	All size
Hose connect	1/4" SAE	1/4" & 3/8" SAE



AT-OTP065

AT-OTP110 Series Max Maxi-Transfer

Correspondent to Yellow Jacket: 77930 MAX-FLOW COMBINATION OIL PUMP

→ General Description

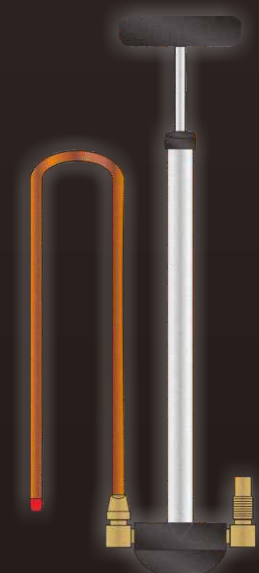
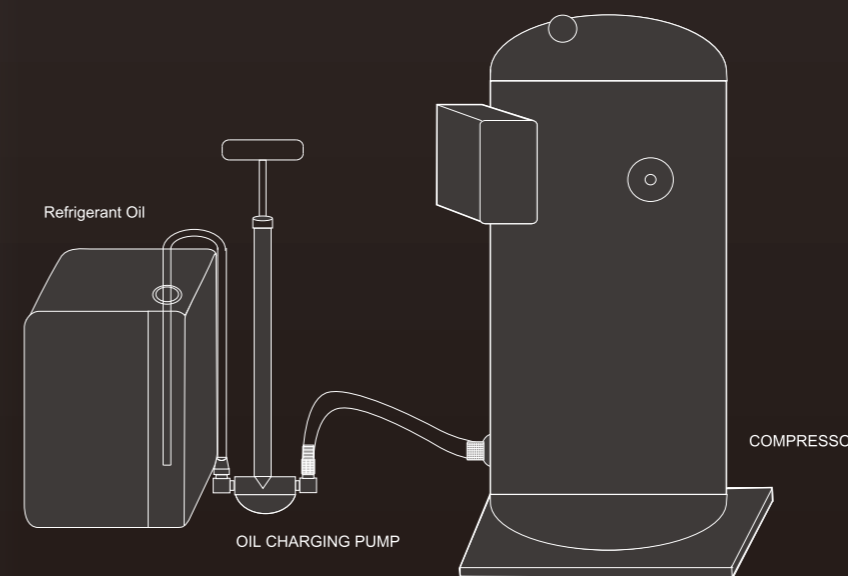
Improved for added reliability and a more power stroke, the MAX MAXI-TRANSFER oil transfer pump is of a high capacity for quick charging. Pump capacity is 3.6 ounces or 110 ml per strok.

→ Fuction

Remove oil for recovery and conversion Add oil to existing systems
 Fit all size oil containers

→ Charasteristics

Foot stand base provides support and leverage while transferring against the high pressures of a running compressors operating unit in reverse with adapter hose accessory removes oil from equipment quickly and efficiently
 Use with alkyl-benzene, ester-based, polyol ester, mineral, and synthtic oils
 Will be suitalbe for pumping against 250 psi pressure

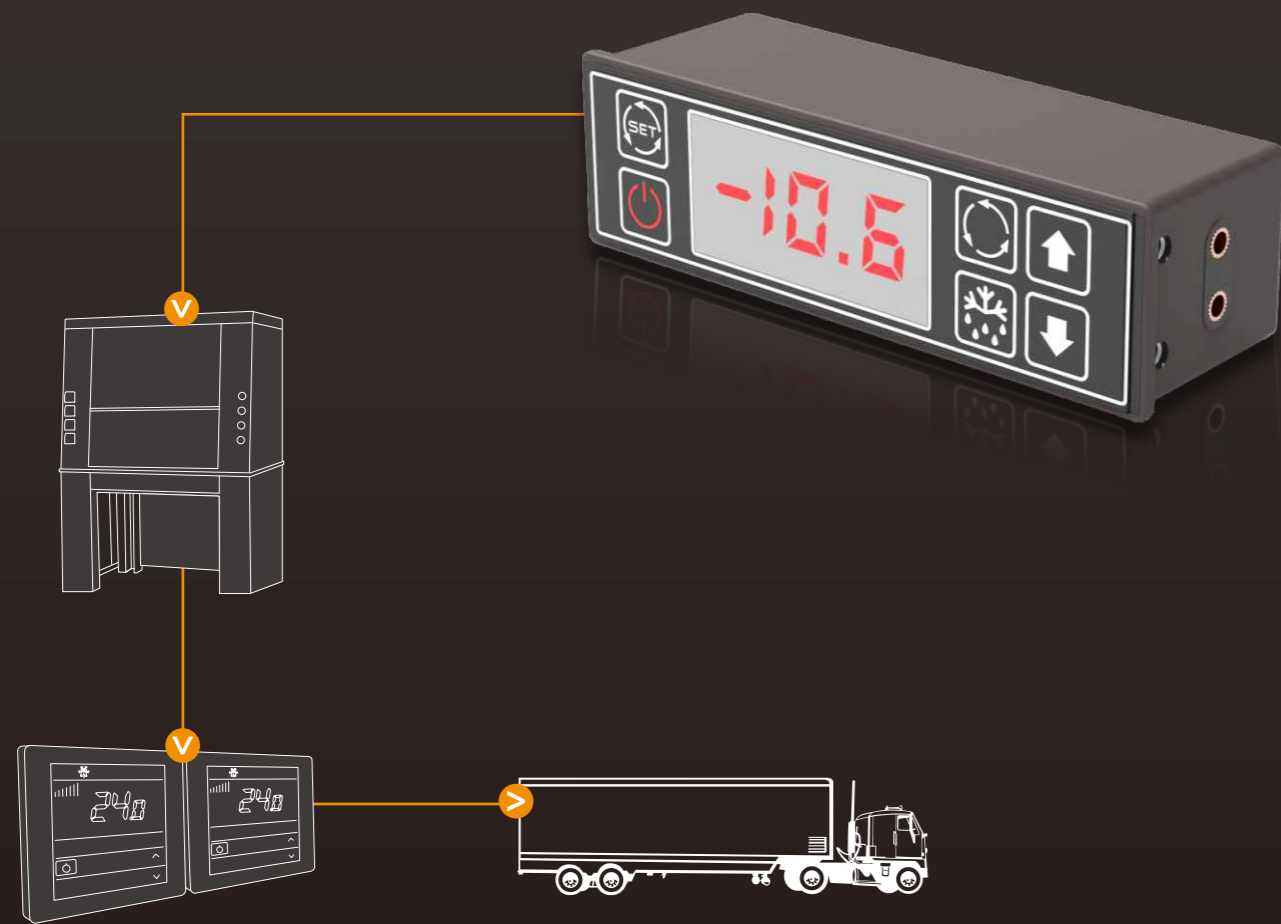


AT-OTP110

ABLTEK

Devoted to be Delicate · Create the World-Class Quality

Controller System Application For Refrigeration



精工细铸
Devoted to be Delicate



打造世界级品质
Create the World-Class Quality



Devoted to be Delicate · Create the World-Class Quality

Digital Thermostat



Model Configuration

A D T - 0 1 - A 1



Applications

- Light Commercial
- Air Conditioning
- Medical And Laboratory
- Transport Cold Chain
- Heat Pump
- Refrigeration Storage



Quick Preview

FEATURES		ADT-01	ADT-02	ADT-03	ADT-04	ADT-06
Power Supply	12 VDC	○	○	○	○	○
	110 VAC	○	○	○	○	○
	230 VAC	○	○	○	○	○
Measure Inputs	Cooling Probe	●	●	●	●	●
	Evaporator Probe	/	/	/	●	●
	Condenser Probe	/	/	/	/	/
Other Inputs	Door Switch	●	●	●	/	●
	High Voltage Switch	/	/	/	/	/
	Locking	/	/	/	/	/
	Low Voltage Switch	/	/	/	/	/
Digital Outputs	Compressor	●	●	●	●	●
	Defrost	/	● ¹	●	●	●
	Fan	/	/	/	/	●
	Light or Alarm	/	/	●	/	/
Other	Copy Bayonet	●	●	●	●	●
	485 Communication Interface	/	/	/	/	/
	Alarm	●	●	●	●	/
	Temperature Conversion	●	●	●	●	●
	One Click Recovery	●	●	●	●	●
	Temperature Compensation	●	●	●	●	●
	Cooling/Heating	●	/	/	/	/

●¹ The Defrost Function Can Be Realized By stopping The Compressor

● : Standard ○ : Optional / : None

Cold Room Electric Control Box



→ Feature

📱 The Split Design Is More Flexible

Control board and electronic control box separation, flexibly installation

📺 The Big Screen Design Is More Convenient

LED large screen, clear and intuitive, easy to operate

🛡️ Safer Work

Strong and weak electricity separation, control away from traditional strong electricity

→ Applications



Refrigeration Industry



Medium-Low Temperature
And Quick-Freezing Small Freezer

→ Medium-low Temperature Cold Storage Electronic Control System

Product	Model	AT-RCB-01	AT-RCB-02	AT-RCB-03
	Control load	Compressor	Compressor,Defrost	Compressor,Defrost, Evaporator
Condensing Unit	Power Supply	380V±10% 50-60Hz		
	Applicable compressor type	Piston Compressor, Scroll Compressor		
	Compressor power and contactor size (optional)	☐ 5HP(18A) ☐ 10HP(25A) ☐ 15HP(32A)		
	Compressor startup method	Directly Start		
	Condenser Type	Air Cooled		
	Alarm	High and low pressure alarm, compressor module alarm		
Cold Room	Cold storage type	Static Evaporator	Celling Evaporators	Celling Evaporator
	Defrosting	No deforst	Electrical deforst	Electrical deforst
Temperature control part	Temperature control panel	RCB-01 with it	RCB-02 with it	RCB-03 with it
	Temperature control range	-50°C~50°C		
	NO. of temperature sensors	2 circuit temperature sensor	2 circuit temperature sensor, 1 circuit defrost temperature sensor	
Protection	Motor protection	Main control board comes with lack of phase, phase sequence, overload, three -phase imbalance		
	Current measurement range	0-80A		
Networking	Remote monitoring	Realize parameters through the smart terminal APP to view and modify, and monitor the operating status of the device in real time		
Other	Use environment	Temperature: -10°C ~ 60°C, humidity: 20%~90%RH (No dew), installed in ventilation and dryness, stay away from the heat source, and avoid direct sunlight		